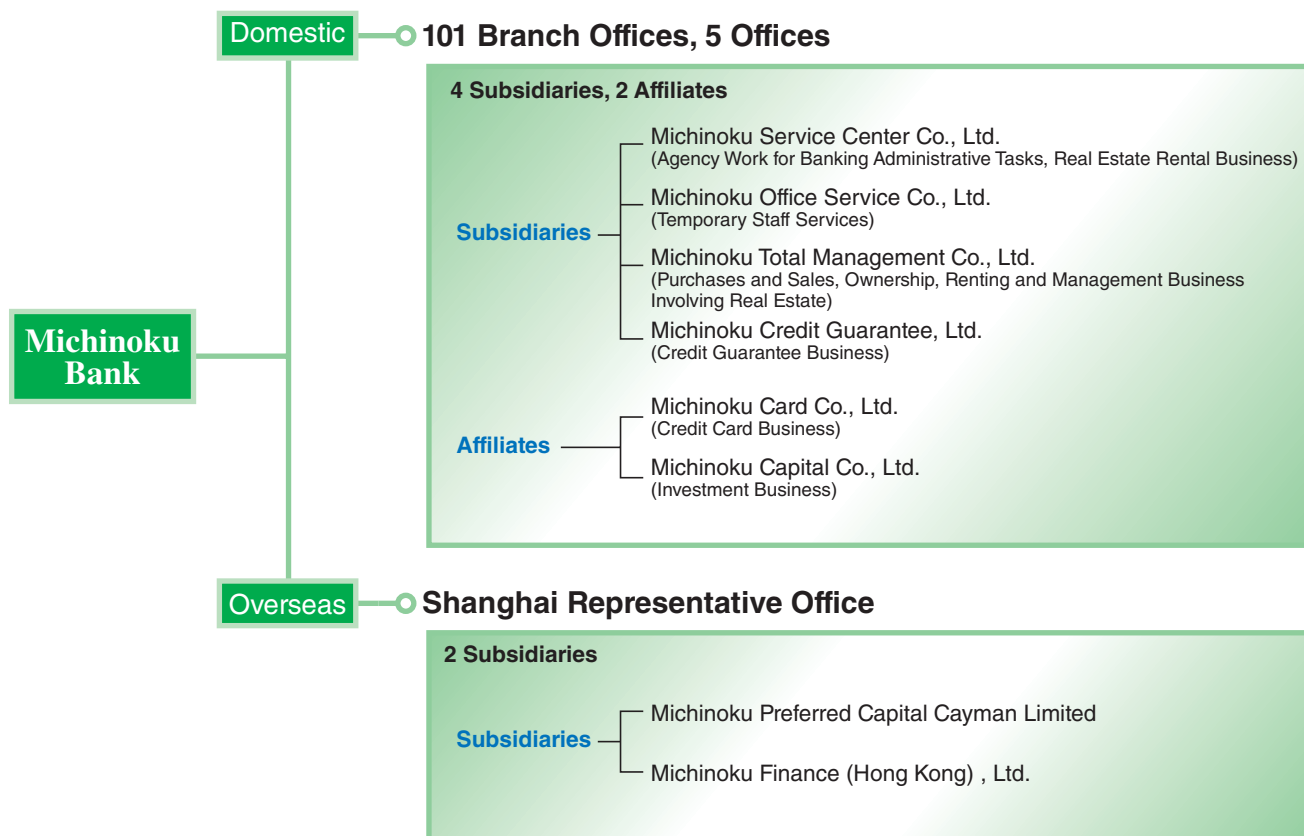


Corporate Group

(As of March 31, 2008)

Organization Chart of Activities by the Corporate Group

The corporate group consists of six subsidiaries and two affiliates. These companies offer financial services such as agency work in banking administrative tasks as well as dispatch of temporary staff, primarily for the banking business.



Notes:

1. The Board of Directors resolved to dissolve Michinoku Finance (Hong Kong), Ltd. at a meeting held on October 12, 2006, and Michinoku Finance (Hong Kong), Ltd. is currently undergoing liquidation proceedings.
2. To issue preferred securities, the Bank established Michinoku Preferred Capital Cayman Limited as a special purpose company on August 10, 2007.
3. The Board of Directors resolved to proceed with the plan to dissolve Michinoku Total Management Co., Ltd. at a meeting held on November 16, 2007.
4. The Michinoku Bank (Moscow), Ltd. was excluded from the scope of consolidation because all of their shares were transferred to Mizuho Corporate Bank, Ltd. and others on January 21, 2008.
5. The Board of Directors resolved to proceed with the plan to acquire additional shares of Michinoku Card Co., Ltd. and make it a consolidated subsidiary at a meeting held on May 15, 2008.

Overseas and Domestic Network

(As of March 31, 2008)

Head Office

1-3-1, Katta, Aomori 030-8622
Phone: (81) 17-774-1111
Facsimile: (81) 17-722-2113

Treasury Administration & International Division

1-3-1, Katta, Aomori 030-8622
Phone: (81) 17-774-1130
Facsimile: (81) 17-722-2113
S.W.I.F.T.: MCHI JP JT

Representative Offices

Shanghai Representative Office

28th Floor, HSBC Tower,
1000 Lujiazui Ring Road,
Pudong New Area,
Shanghai, 200120
P.R. China
Phone: (86) 21-6841-0698
Facsimile: (86) 21-6841-0758

Number of Branch Offices

	Head Office & Branch Offices	Offices	Representative Offices
Aomori Prefecture	83	5	—
Outside Aomori Prefecture	18	—	—
Overseas	—	—	1
Total	101	5	1