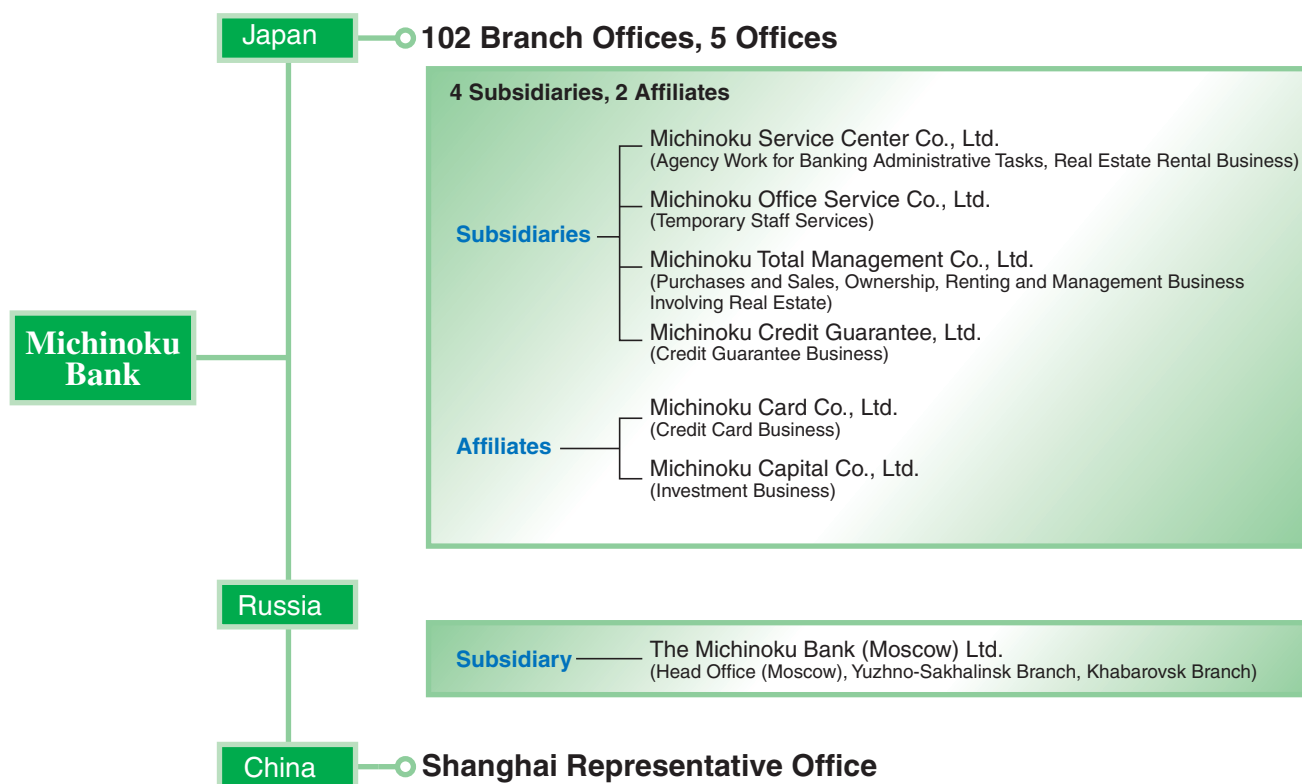


Corporate Group

(As of July 9, 2007)

Organization Chart of Activities by the Corporate Group

The corporate group consists of five subsidiaries and two affiliates. These companies offer financial services such as agency work in banking administrative tasks as well as dispatch of temporary staff, primarily for the banking business.



Overseas and Domestic Network

(As of July 9, 2007)

Head Office

1-3-1, Katta, Aomori 030-8622
Phone: (81) 17-774-1111
Facsimile: (81) 17-722-2113

Treasury Administration & International Division

1-3-1, Katta, Aomori 030-8622
Phone: (81) 17-774-1130
Facsimile: (81) 17-722-2113
S.W.I.F.T.: MCHI JP JT

Representative Offices

Shanghai Representative Office

28th Floor, HSBC Tower,
1000 Lujiazui Ring Road,
Pudong New Area,
Shanghai, 200120
P.R. China
Phone: (86) 21-6841-0698
Facsimile: (86) 21-6841-0758

Subsidiaries

The Michinoku Bank (Moscow) Ltd.

Head Office, Moscow
37 Bolshaya Ordynka, Moscow
119017, Russian Federation
Phone: (7) 495-729-5858
Facsimile: (7) 495-729-5898
S.W.I.F.T.: MCHI RU MM

Yuzhno-Sakhalinsk Branch

No.101 Michinoku Sakhalin Building 1st
Floor, 234 Lenina St., Yuzhno-Sakhalinsk
693000, Russian Federation
Phone: (7) 4242-461116
Facsimile: (7) 4242-744750
S.W.I.F.T.: MCHI RU MMYUS

Khabarovsk Branch

Business Center Parus 2nd Floor,
5 Shevchenko St., Khabarovsk 680000,
Russian Federation
Phone: (7) 4212-64-9600
Facsimile: (7) 4212-64-9522
S.W.I.F.T.: MCHI RU MM KHV

Number of Branch Offices

	Head Office & Branch Offices	Offices	Representative Offices
Aomori Prefecture	84	5	—
Outside Aomori Prefecture	18	—	—
Overseas	—	—	1
Total	102	5	1